

TECHNICAL RIDER



Société Protectrice de Petites Idées



Contacts :

Company: +33 6 34 44 85 91 - contact@societeprotectricedepetitesidees.com

Technical: Loïc – servicetechnique.sppi@gmail.com

Ideal maximum audience: 600 people.

If the audience exceeds 600, please discuss this with the team beforehand, as sound requirements will differ.

Show duration : 50min

Touring team:

- 3 artists
- 2 technicians
- 1 dresser
- 1 production/distribution manager
- 1 electric mini-car named 'Chichinette'

If you have any difficulties fulfilling these requirements, please contact Loïc to find solutions together.

GOOD CONDITIONS FOR HEAVY MOTORS :

Heavy Motors can be performed in unconventional venues such as gyms, industrial spaces, exhibition halls, warehouses, parking lots, courtyards, schoolyards, community halls, museums, or other indoor and outdoor spaces (excluding black boxes).

The show can be performed indoors or outdoors. We aim to maintain a close relationship with the audience and high-quality listening conditions. Outdoor, therefore, a protected and relatively quiet environment is preferred. Indoor, please prioritise a space with low sound reverberation and a dry acoustic, as the performers are not amplified.

For artistic and safety reasons, audience placement must be frontal with a maximum width of 20m.

<https://vimeo.com/361836621> - mot de passe : HMtechnique

The performance will begin 15 minutes before sunset.

The show cannot be performed in case of :

- rain (even light rain)
- if the temperature is below 10°C or above 30°C at the performance site

Please contact us to discuss possible backup options.

STAGE AREA :

- Ideal dimensions: 18m width x 18m depth (minimum 15m x 15m).
- Minimum overhead clearance (ceiling or trees): 5m
- **Floor: hard, flat**, and even surface (concrete, asphalt, compacted earth, fine gravel, etc.).
- **Slope: 0% - impératif**
- Must be accessible for the Chichinette vehicle and our 16m³ truck, with no steps.
- To prevent punctures, please ensure the ground is swept before our arrival.
- Do not wash the surface with water before the show, as we will make chalk markings in the morning.

To confirm suitability, please send photos of the performance area in advance.

The company reserves the right to cancel the performance if the space is not flat and frontal.

AUDIENCE

Please provide:

- At least 2 staff members for audience reception and seating.
- Bleachers with a 20m width.
- Cushions or carpet for 20m width and 3 rows on the ground.
- 6 Vauban-type barriers (more depending on the space, to be determined together).
- Tape barriers to define the area.
- **A 20m linear safety border (height: 30cm, minimum weight: 30kg each** or similar objects such as railway beams, aluminum bridges, sandbags, or concrete blocks).

This safety border is essential and non-negotiable, as the car moves autonomously during parts of the performance.

DRESSING ROOMS / COSTUME / CHICHINETTE AREA

Depending on the site configuration, dressing rooms may be grouped or separate, The spaces must be accessible from the company's arrival until their departure. And the following requirements must be met:

DRESSING ROOM FOR ARTISTS

- private, **within 200m of the stage**
(examples : Hall ou plateau de théâtre, gymnase, hangar, garage, etc.)
- accessible de notre arrivée à notre départ.
- accessible by vehicle 16m³,
- equipped with power (16A + power strip), 1 table, 4 chairs, lighting, catering, WC,
- 5 towels

DRESSERS AREA

With the artists or 3x3m tent with 4 sides + weights, near the stage

- equipped with 16A power + 2 multiprises, 1 Long table, 1 mirror, 3 chairs, lighting, and access to water (tap or 10–15L container)

CHICHINETTE AREA (Charging et préparation)

Avec les artistes ou 6x3m tent with 4 sides + weights + vehicle 16m³ for storage near the stage

- Minimum area: **20 m²**, with an access width of at least **1.70 m**
- Accessible by our 16m³ vehicle
- Equipped with a 16A power supply, one table, and lighting
- Sheltered from public view, with limited foot traffic
- Located within 200 m of the performance area, with no steep slopes or steps between the area and the stage area

COSTUMES :

Given the number of costumes and their condition after the performance, we require **access to a laundry area immediately after the show (for approximately 3 hours) and again the following morning before departure**, in order to retrieve the costumes that will have dried overnight.

This area must include :

- washing machine (30°C short cycle)
- dryer
- clean sink
- drying rack
- the possibility to keep our drying cabinet running overnight (1600W). **Outside the rooms**

The day before departure, we request access to a power outlet in the dresser's accommodation (outside the bedroom) to plug in the drying cabinet.

CATERING :

A simple and efficient catering setup is appreciated, preferably with local and organic products: 5L of fresh water, coffee, tea, cold drinks, fresh vegetables, fruits, bread, cheese, cold cuts, chocolate, and tissues.

DECOR :

- The **'Fake Electric Cabinet'**
- The Chichinette is a custom-made electric vehicle equipped with sound, lights, and a smoke machine. It is valuable and sensitive to weather conditions. Dimensions: 2.50m x 1.60m x 1.50m (H)

It must be stored overnight in a closed garage and **recharged before each performance (4h).**

CONTROL AREA: layout plan attached.

Please provide :

- 4m cable ramp
- 2 stage platforms (h:60cm), 1 table, 1 tall stool, and 1 tent with 4 sides and 4 weights.

SOUND : layout plan attached.

Brought by the company: sound console.

The show requires high-quality speakers and microphone system (voice, singing, electronic music). Contact us if references differ.

Output lines: 6 total

- 1 left + Sub upstage
- 1 right upstage
- 1 left + sub rear bleachers
- 1 right rear bleachers
- 1 stage monitor
- 1 FM transmitter

The sound from the car is transmitted via FM; transmitter at upstage connected by cable (~50m).

Please provide :

- 1 professional-quality sound system adapted to the audience size and venue, PS15 type or equivalent, minimum 15" speakers. 4 speakers + 2 subs
- 1 stage monitor
- All necessary audio cabling (please note that long cable runs are required).
- 50m XLR for FM link
- 16A direct power for FM
- 1 tall mic stand for antenna
- 1 quality wireless handheld SM58 mic.

LIGHT : layout plan attached.

Company provides floor-based lights: 9x500W quartz, 10x150W quartz, 6x1000W quartz, 4x250W iodides, and lighting console.

Please provide :

- all urban/architectural lights are off during show
- total power 16kW - **Power supply and dimmer located upstage left.**
- 12x3kW dimmers
- 2 PAR64 CP61 with stands + Filter holder + Lee Filter 200 gel
- Floor-standing lights (pleasant/soft lighting) for audience exit — also used during strike.
- **Please ensure a clear stage right pathway (no cabling) for vehicle entry when planning your 16A power, DMX, and link cables.**
- *All our fixtures are pre-wired with male and female connectors, allowing direct daisy-chaining between units — no splitters, multi-connectors, or extensions are used. You will therefore only need to supply power at the bleachers to the first fixture of each circuit. (See lighting plot in attached — the fixtures marked in pink indicate those that must be powered.)*

FIRE SAFETY

We use small pyrotechnic effects: T1 'Ardi' smoke and 'Le Tigre Pyragric' firecrackers. Please provide one Class A extinguisher, preferably CO₂, placed at control area.

SCHEDULE TYPICAL

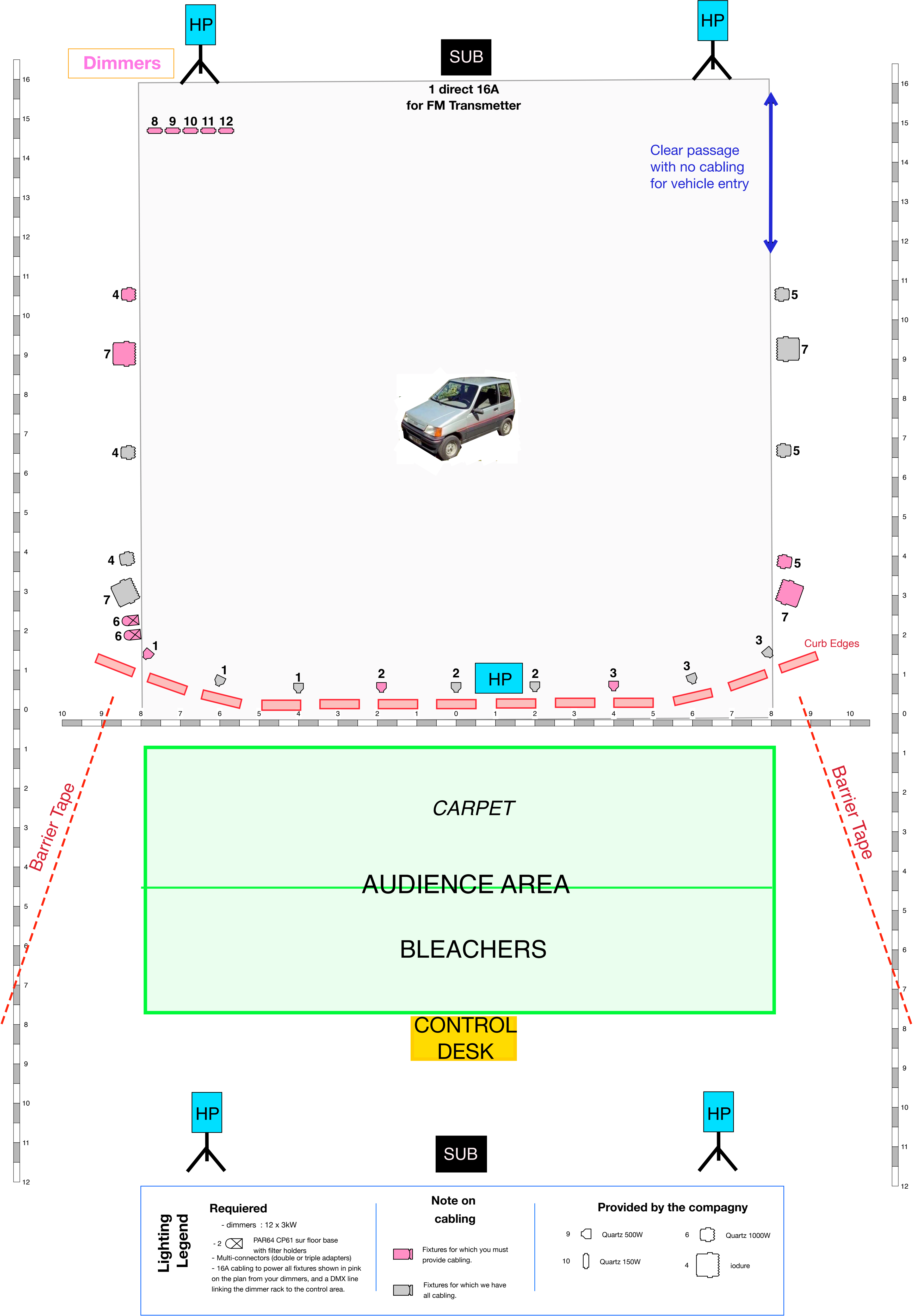
Lorsque cela est possible, nous faisons un repérage la veille avec le régisseur d'accueil.

9H / 9H30	Unloading and space validation.	
9H / 12H	Sound, light, seating, safety setup	1 general tech, 1 sound, 1 light, 2 stage
12H / 13H	Sound/light checks	1 sound, 1 light
13H / 14H	Meal	Site security required
14H / 19H	Stage finishing, barriers, carpet, cleaning, car prep, artist warm-up.	1 general tech
20H / 21H	Console reactivation and final checks.	1 general tech
20H30 / 21H	Brief accueil public	1 general tech + 2 hosts minimum
21H / 22H	Audience arrival.	1 general tech + 2 hosts minimum
22H / 23H	PERFORMANCE	1RegieGé + 2 accueillants minimum
23H / 00H	Strike and loading Cie	1 general tech, 1 sound, 1 light, 2 stage
23H / 02H	Costume care (meal before show for dresser)	
00H / 1H	Meal	
J+1 matin	Costume recovery and company departure.	

Please contact Loïc if you encounter any difficulties meeting these conditions or need clarification. We will find solutions together.

HEAVY MOTORS

contact : Loïc Chauloux - servicetecchnique.spipi@gmail.com



HEAVY MOTORS



Floor: hard, flat
Slope: 0% impératif

**Performance
cannot take
place in
case of rain.**

