

TECHNICAL RIDER



CONTACTS :

Manager : Hélène Michel : +33 6 45 69 82 07
contact@societeprotectricedepetitesidees.com
Stage manager : Aleth Depeyre : +33 6 27 66 12 17
aleth.dep@gmail.com

DURATION : 50min

IDEAL MAXIMUM CAPACITY : 350 people

TOUR TEAM :

2 performers
1 stage manager
1 manager



If you meet problems to answer these requests, do not hesitate to contact us, we can find solutions together.

SPACE :

Cow Love is performed in theaters, unusual spaces, outdoors and indoors, day and night.

(gardens, parking, sheld, old former industrial sites, place of exhibition, etc.)

For the choice of the space, **a quiet place, silent, without passage around**, and if possible **intimate** will be privileged. The stage will be **leaned in a bottom** (wall, vegetation, mound or other one.)

The « stage / public » device will be **frontal**.

Do not hesitate to send us photos of the scenic space.

STAGE

- **Proscenium opening : 10m** minimum
- **Depth : 7m** minimum
- **Trim : 4m** minimum
- Height of stage : ideally at the same level
- Not slippery ground
- Wash the ground before the show and immediately after the end of the show.

AUDIENCE

Thank you for playing a particular attention to the visibility of the public (half of the show takes place unless one meter high)

- Plan a gradinnage upper to 20°
- Possibility of having 3 rows on the ground, in the case, plan pillows
- Space between the edge of the stage and the first row of the will be smallest as possible

DRESSING ROOM

1 equipped dressing room (WC, hot shower and towels, mirror, table, catering)

CATERING

Water, coffee, tea, cold drinks, fresh and dried fruits, bread, cheese, handkerchiefs.



TO BE SUPPLIED BY THE ORGANIZER

- 250 L of fine compost without twigs nor stones or fertilizer, rather biological (risk of infection of eyes).
- helium (to inflate 3 balloons per show)
- 20 cL of cool milk per show
- 1 shovel of construction site

COSTUMES

Plan after every performances the cleaning and the drying of suits. Either, two washing machines.

LIGHT

- Wanted light desk : Congo, Presto ! or Mentor
- Dimmer : 17 dimmer of 1kW + 9 dimmer of 100W + audience lighting on a dimmer
- 6 PC light 1kW or 650W
- 12 PAR64 CP62
- 1 Zoom Profile 1kW with iris
- 10 tree (among which 1 : 3 meters minimum with 1 side arm)
- 7 floor stand

The company comes with 60W luminaires

Perishable to be supplied by the organizer :

- tape (LX tape, desk tape, dance floor tape, alu tape), black wrap
 - filters:
- | | | |
|--------------|-------|---------|
| Lee Filter : | - 202 | Rosco : |
| - 142 | - 728 | - 054# |
| - 201 | | - 119# |

SOUND

- 1 sound system adapted to the theater with 1 SUB and the high speakers to the upstage
- 1 sound keyboard with 1 input microphone, 2 stereo input computer
- 2 D.I.
- 1 mini jack wire (to connect the computer to the sound keyboard)
- 1 XLR 3meters (to connect the effect pedal)
- 1 hand wireless mike
- 1 direct electrical line on the stage

to be brought by the company : 1 effect pedal and 1 computer



REGIE

The light and sound control room necessarily have to be located side by side.

PROPOSED SCHEDULE FOR A PERFORMANCE AT 7:30 PM

	1 sound master, 1 or 2 master electrician, 1 ASM
Day of the show	
	When the team tour arrive on the site, the sound systeme will entirely be pré-settled
9h – 13h	Installation set, focus and sound check
13h – 14h	meal break
14h – 16h30	run through
16h30-17h	stage cleaning
17h – 19h	training and preset
19h- 19h30	audience entrance
19h30 – 20h30	Show
20h30 – 21h30	strike

It's necessary to see again the schedule together for every date of tour.

In case of shared stage, plan:

Before the performance:

- 2 hours before the beginning of the show:
 - heated space for warm-up
 - access to the stage for the preset (feasible in 1 hour if 3 people to help)
- 30min before the start of the show: access to the dressing room for make-up and dressing

After the performance:

- 30min are needed to clean and evacuate the stage
- provide space near the stage to store our props without bothering the other company.

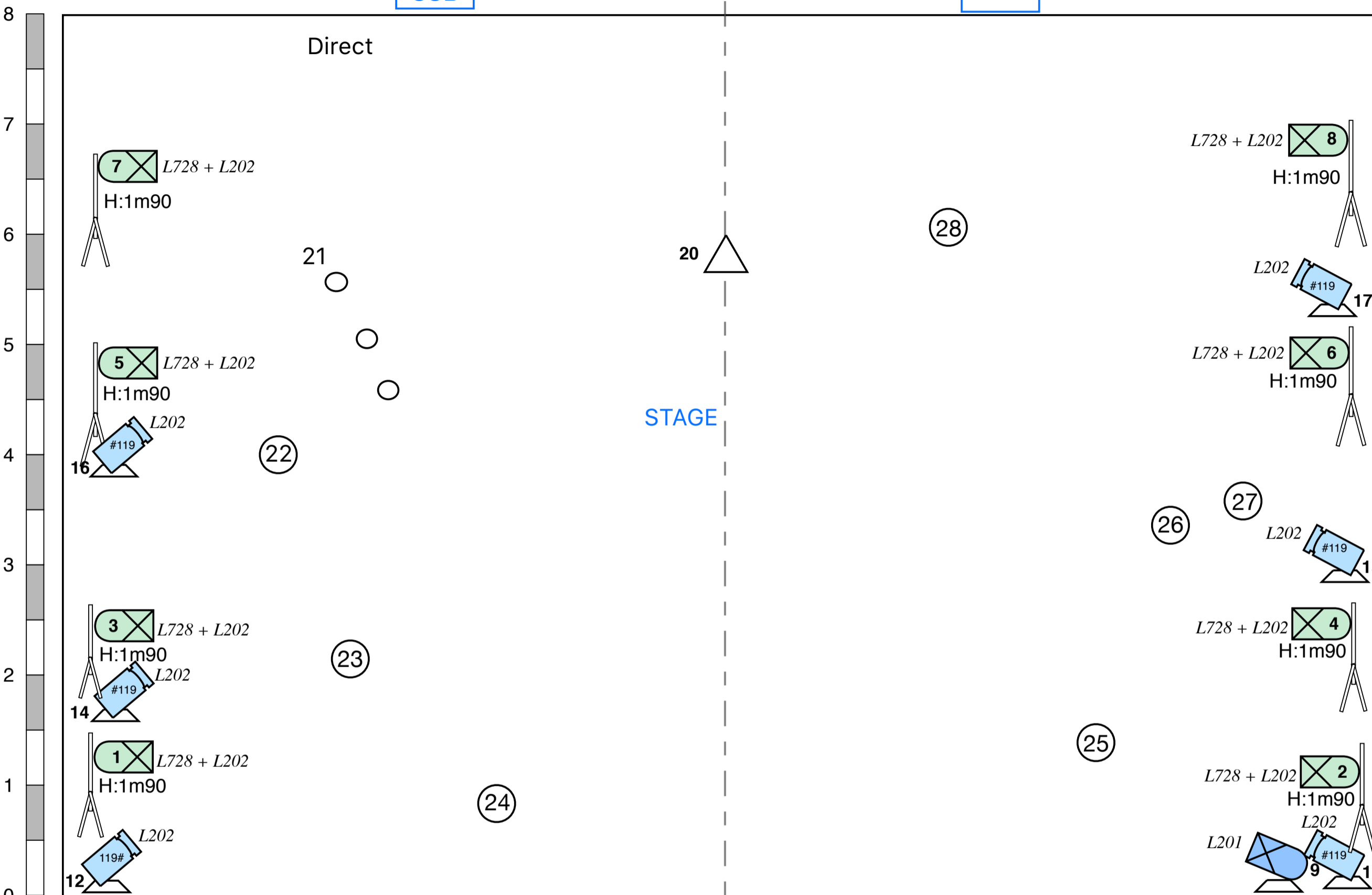
Don't hesitate to contact Aleth Depeyre for any technical information you may need or if you meet problems to gather the hereabove equipment or to offer the definer working condition. We will find solutions together.

COW LOVE

Société Protectrice de Petites Idées

HP +
SUB

HP +
SUB



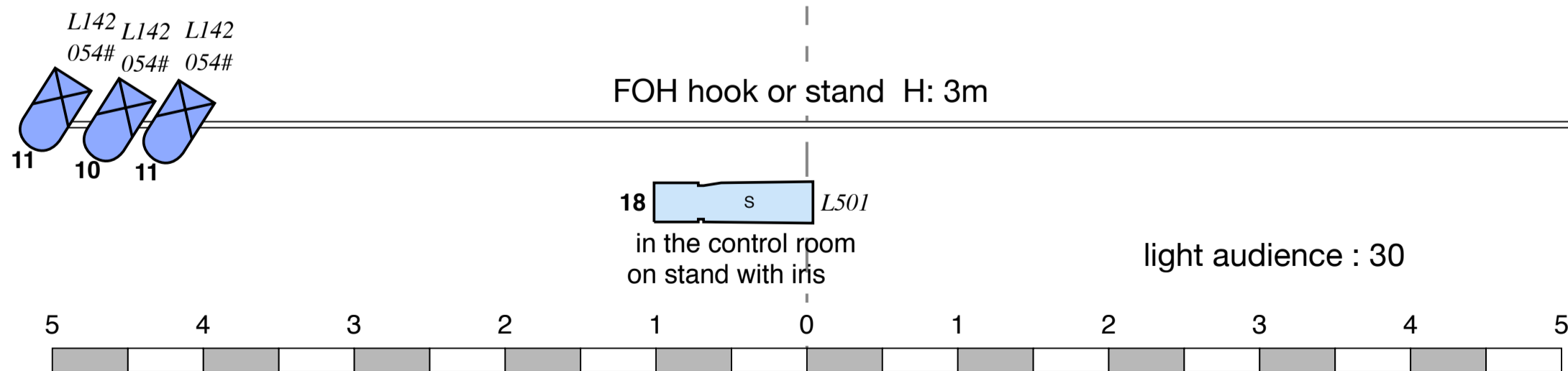
LEGENDE

- 6 PC light 1kW ou 650W
- 12 PAR64 CP62
- 1 Zoom Profile 1kW on stand with iris
- 9 tree (+ 1 tree and 1 side arm if there is no hook point FOH)
- 7 floor stand

Luminaire brought by the company to be wired on graduated lines

- 1 luminaire (60W)
- 3 luminaire (60W)
- 7 luminaire (<20W)

9 dimmer <1kW
19 dimmer 2kW
+ light audience



technical contact : Aleth Depeyre - aleth.dep@gmail.com - 06 27 66 12 17
last update : 23 / 03 / 2024